



PARKS SYSTEM

Playground Assessment

City of St. Ann

December 8, 2017





ACKNOWLEDGEMENTS

ST. ANN PARKS BOARD

Pete de los Santos	Ward 1
Becky Buckley	Ward 2
Mary Godfrey	Ward 3
Joan Zoll	Ward 4
June Deering	Member at Large

ST. ANN PARKS AND RECREATION

Webster Groves Parks and Recreation

Tim Younker	Director of Parks and Recreation
Raini DeBarr	Administrative Assistant
Gary Tennyson	Parks Superintendent
Matt DeBarr	Recreation Leader
Patty Marshall	Senior Coordinator

SWT Design

Tucker Rose	
Jay Wohlschlaeger	Partner

CONTENTS

INTRODUCTION	3
PUBLIC ENGAGEMENT	4
PLAYGROUND ASSESSMENT OVERVIEW	6
INDIVIDUAL PLAYGROUND ASSESSMENTS	14
PLAYGROUND ASSESSMENT MATRIX	28
RESULTS	30
APPENDIX I - PLAYGROUND OPPORTUNITIES	32
APPENDIX II - PLAYGROUND PHOTO INVENTORY	24
APPENDIX III - PUBLIC MEETING NOTES	42

INTRODUCTION

The City of St. Ann has six parks which house seven playgrounds, cover 92 acres, and serve 15,164 residents.

BACKGROUND

The age of the current playgrounds within the St. Ann Parks System and the desire for a strategic approach to the replacement of these playgrounds was the basis for this plan. The playgrounds have been evaluated based on specific criteria reviewed and confirmed with the community. This criteria allowed for a straightforward and unbiased comparison of the playgrounds to determine priorities for improvements or replacements that will best serve the St. Ann community.

PROCESS

This assessment was completed by SWT Design team members through the development of a series of evaluation criteria with the City of St. Ann Staff and community based on their goals and expectations for playground within the parks system. These criteria were organized into a matrix that team members used when visually assessing playgrounds on-site. SWT Design and Parks Staff visited all playgrounds within the City of St. Ann parks system to complete a visual assessment and acquire neighborhood context and park history. There were two public meetings held to gain resident and user opinion on the assessment criteria and process.

Upon completion of the assessment, the playgrounds were scored according to their compliance with the criteria, and then recommendations for replacement need and prioritization of the playgrounds were developed.

INTENT

The intent of this report is to serve as a guideline for decision-making regarding updating and replacing playgrounds in St. Ann. The Playground Assessment Matrix should serve as a guide to understand what elements of a playground and surrounding park are important to consider when developing a new plan, remembering that other factors, including future development, potential funding or partners, etc., will also have an impact on long-term prioritization.



PUBLIC MEETING 1

An introductory public meeting was held on September 20, 2017 at the St. Ann Community Center. Members of the Park Board as well as community members were in attendance. Jay Wohlschlaeger and Tucker Rose, on behalf of SWT Design, presented the existing assessment which included the draft Playground Assessment Matrix and scoring for community review. The feedback that was received from the Park Board and community members was positive and additive. The design team was encouraged to continue with the current direction of the assessment and asked to consider a few more factors that could have impact on existing and future playground use and success. The Park Board members and community members affirmed that the draft scoring and ranking of playgrounds was in alignment with their perceptions of the existing conditions and priority for replacement.

Key comments included:

- Consider how playgrounds can support nearby sport fields
- Consider what will draw in teenaged community members
- Consider amenities for recreation by senior citizens
- Consider recommending the addition of trails and fitness opportunities



	CRITERIA	SCORE	NOTES
Structures & Location	Ward	NA	One
	Manufacturer	NA	Playworld
	Year Installed	NA	2001
	User Age Range	NA	
Accessibility	Age	0	Playground installed more than 15 years ago
	General Conditions	2	Structures are in good condition with some fading of color and chipping of paint
	Paved Walk	2	There is a paved walk to the playground, but it does not meet ADA requirements.
	Surfacing	3	Mulch
	Swings	0	There are no swings present.
Comfort & Convenience	Inclusive Play	2	No inclusive play elements; park not used for major camps or events
	Site Furnishings	1	Benches near playground, shelter with picnic table and trash receptacles nearby
	Shaded Play Area	0	Trees are present but provide minimal shade
	Restroom	1	There is not a path leading to the restroom
	Picnic Shelter	1	Picnic shelter present nearby
	Drinking Fountain	1	Drinking fountain present at nearby restroom
	Lighting (Security)	1	There is a light and camera near the playground
	TOTAL SCORE	13	



SCHAFFER PARK (Wright Avenue)
CITY OF ST. ANN PARKS SYSTEM PLAYGROUND INVENTORY AND ASSESSMENT



September 20, 2017



PUBLIC MEETING 2

A second public meeting was held on October 18, 2017 at the St. Ann Community Center. Members of the park board and community members were in attendance. Jay Wohlschlaeger and Tucker Rose, on behalf of SWT Design, presented the draft playground assessment document with some additional information since the previous meeting, including recommended prioritization for playground replacement and types of elements and playgrounds that could be considered for future opportunities. Community and park board members were in agreement with the list of prioritization recommendations that was compiled by SWT Design. Future opportunities discussed included inclusive play, senior elements, teen elements, fitness, nature play, and adventure play. The community would very much like their playgrounds to be accessible to all residents of the city as well as have elements that provide inclusive play opportunities and cater to individuals of all age groups.

Key discussion points included:

- Approval of prioritization listing
- Future playground opportunities and examples
- Necessity to accommodate seniors and other age groups and skill levels
- Potential to engage more of the community for input at a food truck event
- Possibility to engage kids and seniors at schools and Golden Club, respectively

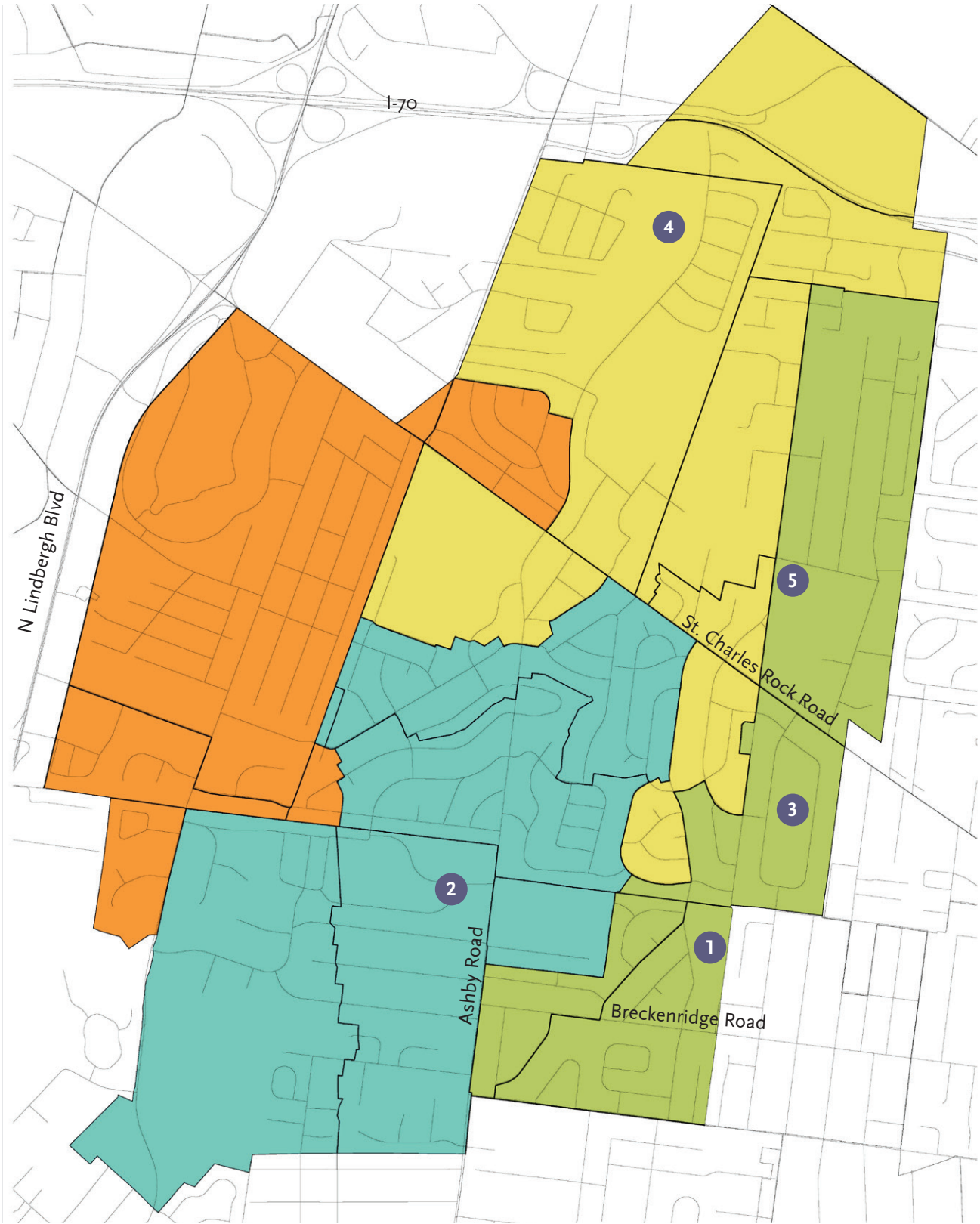


PLAYGROUND ASSESSMENT OVERVIEW

Below and on the following page is an overview of the parks with playgrounds in the City of St. Ann Parks and Recreation system. Following this overview is the assessment of each playground within the parks system.

PARKS & PLAYGROUNDS

Municipal Wards 1 2 3 4



PLAYGROUNDS OF ST. ANN

1. Schafer Park
One Playground



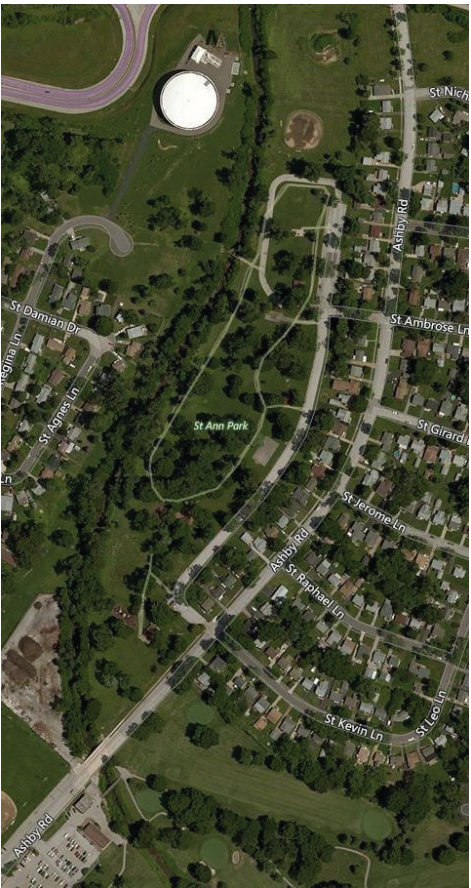
2. Tiemeyer Park
Two Playgrounds



3. Mary Ridge Park
One Playground



4. St. Ann Park
Two Playgrounds



5. Livingston/Wright Park
One Playground





INVENTORY AND EVALUATION CRITERIA

The “Evaluation Criteria” identify factors that will aid in determining the scores for playgrounds within the City of St. Ann. These criteria were developed keeping in mind what constitutes a safe, accessible, and comfortable playground. Evaluating the playgrounds based upon these criteria will result in an understanding of which playgrounds best meet the city's goals and how they compare with one another.

The criteria are organized into three categories. These categories provide a high level of organization for the inventory and evaluation criteria and separate general inventory information from scored evaluation items. The three categories include: Structure & Location (general inventory information), Equipment & Accessibility, and Comfort & Convenience.

The criteria matrix is presented below, and an overview of the criteria items and scoring is provided on the following pages.

	Park	Score	Comments	Recommendations
Structures & Location	Ward			
	Manufacturer			
	Year Installed			
Equipment & Accessibility	Age			
	General Conditions			
	Paved Accessible Walk			
	Surfacing			
	Swings			
	Inclusive Play			
Comfort & Convenience	Site Furnishings			
	Shaded Play Area			
	Restroom			
	Picnic Shelter			
	Drinking Fountain			
	Lighting (Security)			
	TOTAL SCORE			



CRITERIA OVERVIEW

Structure & Location - this category contains the general inventory information for each playground and allows the city to maintain a record of this information in one location that can be updated as playgrounds are updated, replaced, or added.

Ward: A record of the ward location for each playground within the city. This information may be valuable when assessing future capital investment to ensure balanced distribution throughout the city.

Manufacturer: A record of the manufacturer who produced the playground equipment. This information will be valuable for part replacements and providing a quick understanding of what equipment is in each park.

Year Installed: Documents the year in which the playground was installed, and is the basis for the scored “Age” criteria.

Equipment & Accessibility - this category looks at the existing playground equipment and surfacing to assess its condition and the accessibility of the playground. Scoring of these criteria will provide an assessment of the individual playground and a basis for prioritization when multiple playgrounds are compared with one another.

Age: The age of the playground equipment impacts the overall value the equipment brings to the parks system. While many playgrounds can provide recreation opportunities for an extended period of time, the older a piece of equipment is the more difficult it is to find replacement parts when needed and the more likely it is that the equipment does not meet current safety codes. Additionally, having a life-cycle replacement plan for playground equipment will allow the city to better plan for financial investment within the parks and maintain the playground equipment at a higher level of services throughout the parks system.

- Age scoring is:
- 3 - five years old or less
 - 2 - six to fourteen years old
 - 0 - fifteen years or older



General Condition A visual inspection of each playground was performed to assess the general condition of each structure. This inspection was not a CPSI certified inspection and was not intended to identify code or safety guideline compliance. This inspection focused on overall upkeep of the equipment and condition of the components, paint, coatings, etc. It was an inspection to assess the appearance of the playground and the condition of the play components. The visual appearance and physical condition of a playground can impact the desire of users to visit the playground and the play value provided by the playground.

Scoring for the general condition of the playground equipment is:

- 3 - all components (paint, coatings, plastics, etc.) are in good condition and clean.
- 2 - overall good condition, but paint and plastics may be faded or peeling
- 0 - significant issues with paint or coating, equipment is cracked, broken, or removed.

Paved Accessible Walk: In evaluating the playgrounds for the City of St. Ann it was determined that a paved walk to the playgrounds is important to the success in a playground meeting the needs of the community. In scoring this criteria it is recommended that paved walks to playgrounds be accessible in slope and material, and a minimum of five feet wide to allow for safe passage of strollers or mobility aids.

With this expectation, the playground scoring for paved accessible walks is:

- 3 - accessible paved walk five feet wide or greater
- 2 - paved walk in need of repair, less than five feet wide, or not per ADA requirements
- 0 - no paved walk to playground

Surfacing: While many materials are used for playground surfacing, not all are approved as accessible and safe for fall impact. Currently the city has playgrounds with pea gravel, wood fiber, and resilient rubber surfacing. Of these surfacing materials, only wood fiber and resilient rubber are considered accessible surfacing. Looking forward, the city would like to establish resilient rubber surfacing as a standard for playgrounds to increase safety and reduce annual maintenance costs associated with maintaining wood fiber. In evaluating the existing playgrounds, pea gravel has been noted as a priority for replacement while wood fiber surfacing should be replaced in the future, but as an accessible surface it is not a priority for replacement.

Playground surfacing scoring is:

- 3 - resilient rubber surfacing
- 2 - engineered wood fiber surfacing
- 0 - pea gravel or other non accessible surfacing



Swings: These are a high-use amenity at a playground by visitors of all ages.

Incorporating swings into a playground can increase the play value of that playground within the parks system and encourage more use by the community. Swings at a playground should provide a variety of seat styles if space allows. A typical swing will provide belt seats which allow for the most flexibility of use. In addition to belt seats, full bucket infant seats are another standard seat type in playground swings. A third swing seat to include if space is available is a molded plastic bucket seat. This swing seat provides greater stability for individuals with limited upper body strength.

Wheelchair gliders or swing platforms are swing elements that provide an inclusive play experience within a playground. Opportunities for play elements such as these are included in the “Inclusive Play” section of this document.

Swings scoring is:

- 3 - swings including tot buckets and ADA molded seats
- 2 - swings, but no toddler buckets or ADA molded seats
- 0 - playground without swings

Inclusive Play: A standard playground structure provides an accessible play experience by meeting the Americans with Disabilities Act (ADA) guidelines for access to play elements. A playground provides the opportunity to go beyond accessible structures and surfacing to create an inclusive play experience for children and adults of all abilities to play and interact together. Incorporating inclusive play elements within a playground expands the play opportunity for all within the St. Ann community. While this was not a possibility at the time, most of the playgrounds that were installed within the St. Ann parks system now have opportunities to add inclusive elements. These inclusive elements could be added to existing playgrounds, or fully-inclusive playgrounds could be established within the parks system.

In reviewing the existing playgrounds, locations that provide an inclusive play component have been identified as exceeding the typical condition for playgrounds within the St. Ann parks system. Playgrounds without an inclusive component or design approach provide the potentiation to include these valuable design approaches when the playground is replaced or updated. Special consideration should be given to parks that are used for special events or camps that attract visitors from throughout St. Ann.

Inclusive play scoring is:

- 3 - playground with an inclusive play element or structure
- 2 - park without inclusive play, / not home to camps or special events
- 0 - park without inclusive play /is home to camps or special events

Comfort and Convenience - The third category looks at the park elements that enhance the playground user experience. These items provide a recreation value on their own, but when combined with a playground they would make the playground more attractive to users. This encourages visitors to spend more time at the playground and visit more often. When provided, these elements should all be ADA compliant and along accessible routes from the playground. These elements have been scored on a lesser scale based solely on being present at or within close proximity to the individual playground.

Scoring for the Comfort and Convenience elements listed below is:

- 1 - element is present at or in close proximity to the playground
- 0 - element is not present or along an accessible route to the playground

Site Furnishings: Benches at a playground provide locations to sit and watch play while at the playground. Trash receptacles provide visitors a location to dispose of waste and provide an opportunity to maintain a clean play environment.

Shaded Play Area: Shade in a play area creates an environment that allows for longer play on hot, sunny days and can reduce the temperature of metal and plastic on the play structures. When provided by large canopy trees, this shade can also increase the comfort of seating around the playground. Conversely, in cooler months when the trees have dropped their leaves, sun and warmth is provided at the playground. Shade can also be provided through stand-alone or integrated shade structures within the playground equipment which may be removed in the winter months.

Restrooms: Located near a playground, restrooms provide a convenience that will encourage longer stays and attract visitors with small children to visit a park that is not within a short walking distance from their home. Cleanliness and safety are important characteristics that will have a significant impact on the benefits restrooms bring to a playground. While only the presence or absence of a restroom was considered in this scoring evaluation, these characteristics should be priorities for the parks system.

Picnic Shelter: When located near a playground, a shelter can enhance the use of the playground. Shelters can provide a location for shade or a snack/lunch during trips to the playground. Playgrounds can also increase the popularity of a shelter as a rental space for parties or other events by providing a recreation amenity nearby for use during these events. Shelters can be as small as a single table or as large as the city feels is appropriate for the park.

Drinking Fountain: Providing a source of drinking water near the playground is a comfort and convenience for playground users. Consideration can be given to including water bottle fillers and dog bowls as added convenience features to a drinking fountain.

Lighting (Security): Low-level lighting in or around playgrounds and surrounding amenities provides visibility from security patrol vehicles. Security level lighting will increase safety in parks where open hours or special events extend past dusk and will assist in discouraging unwanted activity and vandalism at the playgrounds. Security cameras can also be added in addition to lighting for an additional security measure.

The following section provide an overview and summary of scoring for each playground.



SCHAFER PARK



Park Features

Schafer Park is a seven acre neighborhood park located on Wright Avenue in Ward 1. It has two baseball diamonds, two grills, one restroom, one horseshoe pit, two mini shelters, one pavilion, one playground, one tennis court, and a perimeter trail.

Playground Overview

Schafer Park has a playground that was installed in 2001. The surfacing is wood mulch and several benches are provided along the perimeter of the playground. A shelter with picnic tables and a stand alone restroom building with drinking fountain are located in close proximity to the playground. A paved walk connects the parking lot, playground and shelter, but does not connect to the restroom building.



	Schafer Park	Score	Comments	Recommendations
Structures & Location	Ward		One	
	Manufacturer		Playworld	
	Year Installed		2001	Annual inspection by a CPSI professional
Equipment & Accessibility	Age	0	Playground installed more than 15 years ago	City should consider replacement of the playground in long-range planning for the park
	General Conditions	2	Structures are in good condition with some fading of color and chipping of paint	Equipment is well-maintained and should continue so based on CPSI inspections until replacement
	Paved Accessible Walk	2	There is a paved walk to the playground, but it does not meet ADA requirements.	Renovate walk to make accessible with a minimum width of five feet. Extend walk to connect restroom and drinking fountain.
	Surfacing	2	Mulch	Install poured-in-place rubber surfacing with replacement to meet city's goal for playground surfacing
	Swings	0	There are no swings present.	Swings could be added to enhance the play experience if desired by the community
	Inclusive Play	2	No inclusive play elements; park not used for major camps or events	This park is not used for events or camp, but could still benefit from the addition of an inclusive element(s)
Comfort & Convenience	Site Furnishings	1	Benches near playground, shelter with picnic table and trash receptacles nearby	Ensure these items meet ADA guidelines with future improvements
	Shaded Play Area	0	Trees are present but provide minimal shade	Consider successional planting of trees near play area
	Restroom	1	There is not a path leading to the restroom	Provide accessible path to the restroom
	Picnic Shelter	1	Picnic shelter present nearby	Maintain shelter and accessible connection to the playground and other amenities
	Drinking Fountain	1	Drinking fountain present at nearby restroom	Ensure drinking fountain meets ADA guidelines and provide accessible walk from playground
	Lighting (Security)	1	There is a light and camera near the playground	Security camera exceeds the current standard for playgrounds. Should consider this at all playgrounds where feasible
	TOTAL SCORE	13		

Playground Recommendation

Schafer Park achieves the second-highest score of the playgrounds in the City of St. Ann parks system. Due to its high ranking and lower comparative usage, the recommendation for priority of replacement of this playground would be lower in comparison to other playgrounds.



TIEMEYER PARK - Shelters 1-2-3



Park Features

Tiemeyer Park, located on Ashby Road in Ward 3, is St. Ann's largest park at 41 acres. It has one amphitheater, two baseball diamonds, six grills, four comfort stations, four horseshoe pits, one lake, two mini shelters, four pavilions, two playgrounds, one roller hockey rink, two swimming pools, two tennis courts, two volleyball courts, and a loop trail system.

Playground Overview

Tiemeyer Park has two playgrounds. This playground is located on the east end of the park near the tri-pavilion complex. This area of the park is highly active and is home to the park's summer camps.

This playground includes a Miracle play structure and a separate swing area that was added at a later date. The surfacing at the play structure is pea gravel and mulch surfacing is installed at the swings. There is a significant grade change from the shelters up to the playground, and there is no direct path to traverse this route. A restroom and drinking fountain are located nearby, but are not connected to the playground with an accessible route.



	Tiemeyer 1-2-3	Score	Comments	Recommendations
Structures & Location	Ward		Three	
	Manufacturer		Miracle	
	Year Installed		1994	Annual inspection by a CPSI professional
Equipment & Accessibility	Age	0	Playground installed 15 or more years ago	City should consider replacement of the playground in long-range planning for the park
	General Conditions	2	Good condition, some chipped paint and tears in rubber coating	Equipment is well-maintained and should continue so based on CPSI inspections until replacement
	Paved Accessible Walk	0	No existing path	Accessible path to connect to play area, consider connecting to existing loop trail, restroom, and shelter
	Surfacing	0	Pea gravel	Install poured-in-place rubber surfacing with replacement to meet city's goal for playground surfacing. Mulch may be a temporary replacement to provide an accessible surfacing
	Swings	2	Swings nearby, there is no existing path to the swings	Add accessible path to swings, install rubber surfacing
	Inclusive Play	0	There are no inclusive elements and the park is used for camps and events	Inclusive play would be highly beneficial as this park draws high traffic due to camps and events that are held in the park
Comfort & Convenience	Site Furnishings	1	Benches near playground and tri-pavilion shelter with many picnic tables	Ensure these items meet ADA guidelines with future improvements
	Shaded Play Area	0	No shade existing at playground	Consider planting trees near playground
	Restroom	1	Restroom nearby, no path from playground to access	Consider adding path to connect to play area
	Picnic Shelter	1	Large shelter nearby, no path to access from playground and significant slope	Consider adding path to connect to play area and mitigate slope
	Drinking Fountain	1	Drinking fountain existing at nearby restroom	Consider adding path to connect to play area
	Lighting (Security)	0	No lighting at playground	Consider adding lighting for safety and security
	TOTAL SCORE	8		

Playground Recommendation

Tiemeyer Park - Shelters 1-2-3 Playground received the second-lowest score of all the playgrounds in the City of St. Ann system. Due to its high usage and the events that are held in the park, this playground is the highest priority for replacement. Additionally, due to the high usage and unique topographical aspects of the site, consideration should be given to a specialized type of playground experience as outlined in the appendix.



TIEMEYER PARK SHELTER #4 AND WAR MEMORIAL



Park Features

Tiemeyer Park, located on Ashby Road in Ward 3, is St. Ann's largest park at 41 acres. It has one amphitheater, two baseball diamonds, six grills, four comfort stations, four horseshoe pits, one lake, two mini shelters, four pavilions, two playgrounds, one roller hockey rink, two swimming pools, two tennis courts, two volleyball courts, and a loop trail system.

Playground Overview

Tiemeyer Park has two playgrounds. One has mulch surfacing and one has pea gravel surfacing. The playground with mulch surfacing is near the War Memorial. It was installed in 2002 from the manufacturer Miracle and has a paved walk to access the playground. There are swings nearby as well as benches at the edge of the playground. Shelter #4 provides a pavilion, restroom and drinking fountain near the playground. These amenities are located approximately 250' from the swing area.



	Tiemeyer War Memorial	Score	Comments	Recommendations
Structures & Location	Ward		Three	
	Manufacturer		Miracle	
	Year Installed		2002	Annual inspection by a CPSI professional
Equipment & Accessibility	Age	0	Playground installed 15 or more years ago	City should consider replacement of the playground in long-range planning for the park
	General Conditions	3	Structures in good condition with minimal fading or chipping	Equipment is well-maintained and should continue so based on CPSI inspections until replacement
	Paved Accessible Walk	2	There is a walk to access the playground; it does not meet ADA requirements	Renovate walk to make accessible with a minimum width of five feet.
	Surfacing	2	Mulch	Install poured-in-place rubber surfacing with replacement to meet city's goal for playground surfacing
	Swings	2	Swings exist nearby	Add accessible path to swings, install rubber surfacing
	Inclusive Play	0	There are no inclusive elements and the park is used for camps and events	Inclusive play would be highly beneficial as this park draws high traffic due to camps and events that are held in the park
Comfort & Convenience	Site Furnishings	1	Benches are provided near playground	Ensure these items meet ADA guidelines with future improvements
	Shaded Play Area	0	There is no shade at playground area	Consider planting trees near playground or providing shade in another way
	Restroom	1	There is a restroom at Shelter #4	Shelter #4 provides this convenience, but it is a distance from the playground
	Picnic Shelter	1	Shelter #4 is approximately 250' from the swing area and 450' from the playground.	Shelter #4 provides this convenience, but it is a distance from the playground
	Drinking Fountain	0	There is a drinking fountain at Shelter #4, but the distance away is a challenge	While provided at Shelter #4 it is recommended an additional drinking fountain be provided closer to the playground
	Lighting (Security)	0	There is no lighting at the playground area	Consider adding lighting to the play area for safety and security
	TOTAL SCORE	12		

Playground Recommendation

Tiemeyer Park Shelter #4 and War Memorial Playground is among the top three ranked playgrounds in the City of St. Ann parks system. While it is one of the newest playgrounds it is still older than fifteen years of age. It is in a park that hosts events and draws many visitors; however, due to its higher ranking and the prioritization placed on the other playground within Tiemeyer Park this playground is a low priority for replacement.

INDIVIDUAL PLAYGROUND ASSESSMENTS



MARY RIDGE PARK



Park Features

Mary Ridge Park is located between St. Martha Lane and Westridge Lane in Ward 1. The park consists of three acres with one baseball diamond, one grill, one comfort station, one horseshoe pit, one pavilion, and one playground.

Playground Overview

The playground at Mary Ridge Park was installed in 2000 and was manufactured by Playworld. There is a significant change in elevation from the parking lot and shelter down to the playground, and an accessible walk is not provided to playground area. The playground surfacing is mulch, and benches at the boundary of the playground. The shelter at the parking lot provides picnic tables, restrooms, and a drinking fountain.



PLAYGROUND ASSESSMENT MATRIX



	Mary Ridge Park	Score	Comments	Recommendations
Structures & Location	Ward		One	
	Manufacturer		Playworld	
	Year Installed		2000	Annual inspection by a CPSI professional
Equipment & Accessibility	Age	0	Playground was installed more than 15 years ago	City should consider replacement of the playground in long-range planning for the park
	General Conditions	3	Structures in good condition, one swing is missing and playground is dirty but not visibly damaged	Equipment is well-maintained and should continue so based on CPSI inspections until replacement; missing swing should be replaced
	Paved Accessible Walk	0	There is no existing walk	Install accessible path to connect to play area, consider connecting to restroom and shelter as well
	Surfacing	2	Mulch	Install poured-in-place rubber surfacing with replacement to meet city's goal for playground surfacing
	Swings	2	There are swings, but there is not a path to access them.	Add accessible path to swings, install rubber surfacing
	Inclusive Play	2	No inclusive elements, but park is not used for camps or events	This park is not used for events or camp, but could still benefit from the addition of an inclusive element(s)
Comfort & Convenience	Site Furnishings	1	There are benches near the playground and a shelter up the hill but no accessible route exists	The value of these amenities can be increased with the addition of accessible walks to the playground from these amenities
	Shaded Play Area	1	Play area has shade provided by trees	Trees should be evaluated by a certified arborist as part of a park maintenance program for deadwood or hazardous conditions and addressed per arborist recommendations
	Restroom	1	There is a restroom, but it only has an accessible path from the parking lot	Consider adding an accessible path to the playground from the restroom
	Picnic Shelter	1	There is a shelter connected to the restroom	Consider adding an accessible path to the playground from the shelter
	Drinking Fountain	1	There is a drinking fountain at the restroom	Consider adding an accessible path to the playground from the drinking fountain
	Lighting (Security)	0	There is no lighting at the playground area	Consider adding lighting at the play area for safety and security
	TOTAL SCORE	14		

Playground Recommendation

The playground at Mary Ridge Park received the highest score of the playgrounds in the City of St. Ann parks system. An accessible walk to the playground would significantly increase the value of the playground to the surrounding community. However, overall the playground is in good condition and this park is not used for major events. The playground has earned high marks for its good condition and amenities which translates to a low recommendation for priority of replacement. Also, consideration should be given to implementing a succession planting of trees to ensure the playground continues to have shade as the current trees age and their health begins to decline.



ST. ANN PARK 1



Park Features

St. Ann Park is on Ashby Road in Ward 2 and occupies thirty-three acres with one baseball diamond, seven grills, a half-basketball court, two comfort stations, two horseshoe pits, two mini shelters, two playgrounds, and a loop walking trail with connections to parking lots and surrounding neighborhoods.

Playground Overview

St. Ann Park has two playgrounds. This playground is located at the south end of the park. The surfacing at this playground is mulch, and several benches are located along the playground edging. The nearby shelter provides picnic tables, a drinking fountain and restrooms. A concrete walk connects the shelter to a nearby parking lot and is close to the playground, but this walk does not provide direct access to the playground surfacing or benches around the playground. This playground is often used by adults with disabilities.



	St. Ann 1	Score	Comments	Recommendations
Structures & Location	Ward		Two	
	Manufacturer		Miracle	
	Year Installed		1994	Annual inspection by a CPSI professional
Equipment & Accessibility	Age	0	Playground was installed more than 15 years ago	City should consider replacement of the playground in long-range planning for the park
	General Conditions	2	Structures in good condition for their age, need cleaning	Equipment is well-maintained and should continue so based on CPSI inspections until replacement
	Paved Accessible Walk	2	There is a path to the playground; it does not meet ADA requirements	Renovate walk to make accessible with a minimum width of five feet. The use of this playground by adults with special needs makes this accessible walk a high priority for this playground.
	Surfacing	2	Mulch (only partially mulched, soil is exposed in some areas)	Install poured-in-place rubber surfacing with replacement to meet city's goal for playground surfacing
	Swings	0	There are no swings at this playground	Swings could be added to enhance the play experience if desired by the community
	Inclusive Play	0	There are no inclusive elements and the park is used for events	Inclusive play would be highly beneficial as this park draws high traffic due to camps and events that are held in the park
Comfort & Convenience	Site Furnishings	1	There are benches near the playground and nearby shelter	Ensure these items meet ADA guidelines with future improvements
	Shaded Play Area	1	The playground is partially shaded by nearby trees	Trees should be evaluated by a certified arborist as part of a park maintenance program for deadwood or hazardous conditions and addressed per arborist recommendations
	Restroom	1	There is a restroom nearby, but there is not a direct path to from the playground	Concrete walk should connect this amenity to the playground for ADA access
	Picnic Shelter	1	There is a nearby shelter connected to the restroom	Concrete walk should connect this amenity to the playground for ADA access
	Drinking Fountain	1	There is a nearby fountain at the restroom	Concrete walk should connect this amenity to the playground for ADA access
	Lighting (Security)	0	There is no lighting at the playground	Consider installing lighting for safety and security
	TOTAL SCORE	11		

Playground Recommendation

Playground 1 at St. Ann Park is ranked in the middle of the seven playgrounds in the City of St. Ann parks system. There are several improvement updates that can be completed on a short timeline and relatively small budget that would improve the playground and increase the value within the system, extending the timeline for replacement. These include completing the refill of mulch surfacing and connecting the concrete walk to the playground. This playground is used often by adults with disabilities and special events, so an accessible route is very important,. This would be a good playground to consider inclusive elements.



ST. ANN PARK 2



Park Features

St. Ann Park is on Ashby Road in Ward 2 and occupies thirty-three acres with one baseball diamond, seven grills, a half-basketball court, two comfort stations, two horseshoe pits, two mini shelters, two playgrounds, and a loop walking trail with connections to parking lots and surrounding neighborhoods.

Playground Overview

This playground is more centrally located within the park and consists of a structure area and a separate swing area. This playground is not connected to any other park elements with a paved walk. The surfacing is pea gravel, and there are benches along the boundary of the playground. Picnic tables are located within the lawn under tree canopy cover near the play structures. This playground is provided shade by many large tree. There is a mini shelter fairly close, but there is no path connecting the mini shelter to the playground.

The shelter with restroom and drinking fountain that supports the St. Ann Park 1 playground is in close enough proximity to support his playground also.



	St. Ann 2	Score	Comments	Recommendations
Structures & Location	Ward		Two	
	Manufacturer		Miracle	
	Year Installed		1994	Annual inspection by a CPSI professional
Equipment & Accessibility	Age	0	Playground was installed more than 15 years ago	City should consider replacement of the playground in long-range planning for the park
	General Conditions	2	Structures are generally in good condition, there is a cracked slide	Equipment is well-maintained and should continue so based on CPSI inspections until replacement
	Paved Accessible Walk	0	There is no existing walk	Install accessible path to connect to play area, consider connecting to restroom and shelter as well
	Surfacing	0	Pea gravel	Install poured-in-place rubber surfacing with replacement to meet city's goal for playground surfacing. Mulch may be a temporary replacement to provide an accessible surfacing
	Swings	2	There are swings nearby, there is no path to the swings	Add accessible path to swings, install rubber surfacing
	Inclusive Play	0	There are no inclusive elements and this park is used for events	Inclusive play would be highly beneficial as this park draws high traffic due to camps and events that are held in the park
Comfort & Convenience	Site Furnishings	1	There are benches near the playground	Ensure these items meet ADA guidelines with future improvements
	Shaded Play Area	1	The playground is shaded well by large trees	Trees should be evaluated by a certified arborist as part of a park maintenance program for deadwood or hazardous conditions and addressed per arborist recommendations
	Restroom	1	There is a restroom	Paved walk should be extended to connect this amenity to the playground for ADA access
	Picnic Shelter	1	There is a shelter	Paved walk should be extended to connect this amenity to the playground for ADA access
	Drinking Fountain	1	There is a drinking fountain	Paved walk should be extended to connect this amenity to the playground for ADA access
	Lighting (Security)	0	There is no lighting at the playground area	Consider installing lighting for safety and security
	TOTAL SCORE	9		

Playground Recommendation

Playground 2 at St. Ann Park received the third-lowest ranking. It should be a high priority for replacement as it is highly-used and the park hosts large city events. This would be a playground to consider making a destination and/or including inclusive elements or those that target specific age groups as it is in a prominent park within the St. Ann Parks System. Specialized playground opportunities are outlined in the appendix.



LIVINGSTON/WRIGHT PARK



Park Features

Livingston/Wright Park is a half-acre park located at the corner of Livingston Avenue and Wright Avenue in Ward 1. The park has one playground, one small shelter, one grill, and one horseshoe pit.

Playground Overview

Livingston/Wright Park is a small park with one playground that was installed around the year 1991. There is no walk to access the playground, and there is no parking. The playground surfacing is pea gravel. There are two benches with views to the playground located along the west edge of the park. There is a small shelter structure providing two picnic tables and trash receptacles beneath it. There are several large trees on the site near the playground.

The park does not contain internal paved walks or connections to the park features. There is no restroom or drinking fountain provided within the park.

This park is located near a large sports complex with several athletic fields and a large parking lot. While not a City of St. Ann sports facility the playground is used by visitors to this facility.



	Livingston/ Wright Park	Score	Comments	Recommendations
Structures & Location	Ward		One	
	Manufacturer		Iron Forge	
	Year Installed		1991	Annual inspection by a CPSI professional
Equipment & Accessibility	Age	0	Playground was installed more than 15 years ago	City should consider replacement of the playground in long-range planning for the park
	General Conditions	2	Structures are in good condition, some chipped paint and rubber coating	Equipment is well-maintained and should continue so based on CPSI inspections until replacement
	Paved Accessible Walk	0	There is no existing walk	Install accessible path to connect to play area, consider connecting to restroom and shelter as well
	Surfacing	0	Pea gravel	Install poured-in-place rubber surfacing with replacement to meet city's goal for playground surfacing. Mulch may be a temporary replacement to provide an accessible surfacing
	Swings	2	There are swings, they are only belt swings	Add accessible path to swings, install rubber surfacing
	Inclusive Play	2	There are no inclusive elements and the park is not used for camps or events	This park is not used for camps or events, but could still benefit from inclusive elements, but this is a low priority due to the low traffic of the playground
Comfort & Convenience	Site Furnishings	0	There are no nearby site furnishings	Consider adding benches near the playground and ensure these items meet ADA guidelines
	Shaded Play Area	0	Shade is not provided at play area (existing trees are in bad condition)	Trees should be evaluated by a certified arborist as part of a park maintenance program and addressed per arborist recommendations
	Restroom	0	There is no restroom	not recommended to add a restroom
	Picnic Shelter	1	There is a small picnic shelter	
	Drinking Fountain	0	There is no drinking fountain	not recommended to add a drinking fountain
	Lighting (Security)	0	There is no lighting at playground area	Consider adding lighting for safety and security
	TOTAL SCORE	7		

Playground Recommendation

it is not recommended to invest in significant change to the playground without considering replacement of the entire playground due to the age of the structures and pea gravel surfacing.

While this playground received the lowest ranking the recommendation for priority of replacement is not high due to the low usage of the playground. The structures are in good condition for their age and are not in high demand for events or general usage.

PLAYGROUND ASSESSMENT MATRIX



The Playground Assessment Matrix has been developed to evaluate the City of St. Ann's playgrounds. The matrix provides general information about the playgrounds under the "Key Criteria" category. This is information that is important and relevant to the assessment of the playgrounds, but it is not scored as they do not impact the safety or play value or the playground. The "Evaluation Criteria" items are scored and weighted to assess the value provided by each playground and the need for improvements or replacement. A detailed summary of this criteria is presented in the previous section.

	Key Criteria (Not Scored)			Evaluation Criteria					
	Structures and Location			Equipment & Accessibility					
	Ward	Manufacturer	Year Installed	Age	General Condition*	Paved Accessible Walk	Surfacing	Swings	Inclusive Play
Livingston/Wright Park	One	Iron Forge	1991	O	2	O	O	2	2
Tiemeyer Park Shelter 1-2-3	Three	Miracle	1994	O	2	O	O	2	O
St. Ann Park 2	Two			O	2	O	O	2	O
St. Ann Park 1	Two	Miracle	1994	O	2	2	2	O	O
Tiemeyer Park Shelter #4 and War Memorial	Three			O	3	2	2	2	O
Schafer Park	One	Playworld	2001	O	2	2	2	O	2
Mary Ridge Park	One	Playworld	2000	O	3	O	2	2	2

*The Playground "General Condition" category is based solely on visual observation, and it is our recommendation that a certified individual assess the condition, safety, and compliance of playground equipment and structures. This evaluation should occur annually or more frequently if required.



Evaluation Criteria						TOTAL SCORE
Comfort & Convenience						
Site Furnishings	Shaded Play Area	Restroom	Picnic Shelter	Drinking Fountain	Lighting (Security)	
O	O	O	1	O	O	7
1	O	1	1	1	O	8
1	1	1	1	1	O	9
1	1	1	1	1	O	11
1	O	1	1	O	O	12
1	O	1	1	1	1	13
1	1	1	1	1	O	14



RANKING VS. PRIORITIZATION

No two playgrounds received the same score, making the ranking relatively clear upon first glance; however, other factors such as neighborhood or city-wide use need to be taken into consideration before any measures are taken to update or replace a playground. For example, Livingston/Wright Park received the lowest score, putting it at the top of the list for replacement. However, Livingston/Wright Park is not used for annual events or camps therefore its priority for replacement is lower than the playground at Tiemeyer Park by the 1-2-3 Shelter which received the second-lowest score but draws many visitors with annual summer camps and other events.

RANKING (low to high)

- 1. Livingston/Wright Park
- 2. Tiemeyer Park 1-2-3
- 3. St. Ann Park 2
- 4. St. Ann Park 1
- 5. Tiemeyer Park War Memorial
- 6. Schafer Park
- 7. Mary Ridge Park

PRIORITIZATION (high to low)

- 1. Tiemeyer Park 1-2-3
- 2. St. Ann Park 2
- 3. St. Ann Park 1
- 4. Tiemeyer Park War Memorial
- 5. Schafer Park
- 6. Mary Ridge Park
- 7. Livingston/Wright Park

Parks that received lower scores and are heavily used, especially for large events and camps receive the highest prioritization recommendation while parks that receive higher scores or are not as frequently used received lower prioritization recommendations.

APPENDIX I - PLAYGROUND OPPORTUNITIES



This appendix showcases special playground elements and types that could be considered for implementation in certain parks within the City of St. Ann, some of which were recommended by community members. These examples show some more detail and inspiration about potential future opportunities to incorporate into master planning for each park and playground.

INCLUSIVE PLAY

Inclusive play includes design that allows children of various abilities to all have elements on the playground that they can navigate and utilize alongside one another. Inclusivity goes beyond accessibility to not only provide access but allow and encourage integration of all skill levels to create an environment where no one feels isolated.



SENIOR ELEMENTS

Playground design can address all ages, including today's active senior demographic. These elements could include structures that don't require as much physical strength or stability, but can be incorporated into the more active play environment.



TEEN ELEMENTS

Consideration should be given to incorporating elements that cater to the desires of teenagers. These elements often include passive spaces for visitors to hang out and socialize, and could also manifest in a skate park or pump track as suggested by a community member.



FITNESS

Outdoor fitness equipment can be added to a playground which can increase the user age range as well as user demographics. There is a variety of outdoor fitness equipment that exists, so there are options that could be well-suited to a variety of spaces and parks. Fitness elements would be a good addition to a park used primarily by the surrounding neighborhood rather than as a destination element.



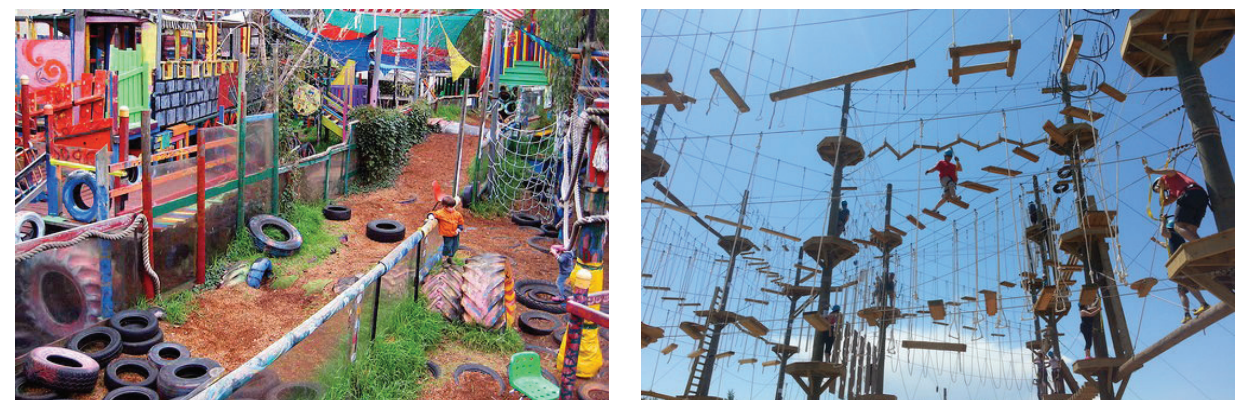
NATURE PLAY

Nature play incorporates natural elements into a playground to achieve a more immersive experience for visitors to engage with natural materials while also creating a more naturalistic aesthetic. This could be an aspect that would draw visitors to a destination playground.



ADVENTURE PLAYGROUND

Playgrounds that are highly stimulating, sometimes using raw or alternative materials, can be considered adventure playgrounds. This type of playground draws visitors and adds variety and interest beyond a standard playground. A good location for an adventure playground would be a heavily-used, large park.



Tiemeyer 1-2-3



St. Ann 2



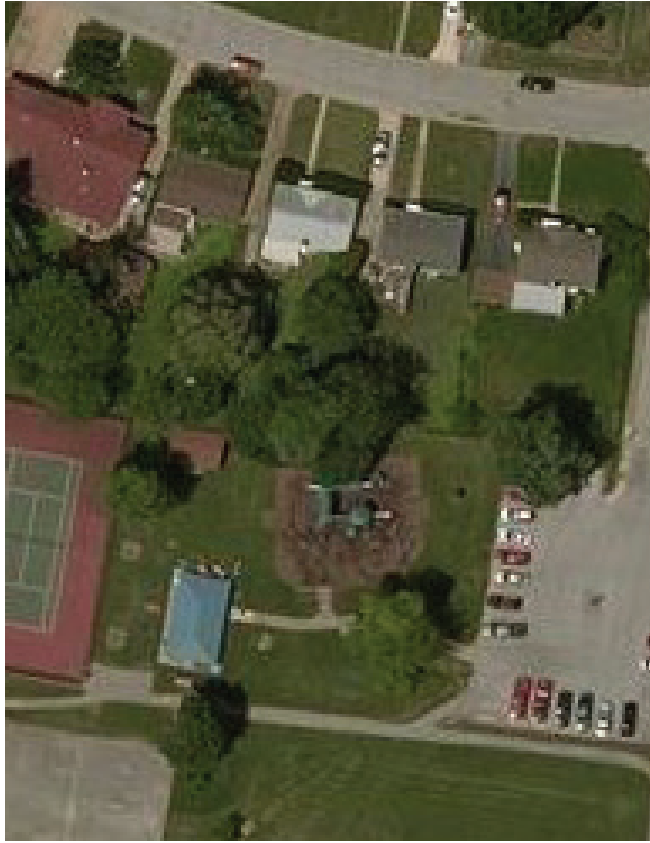
St. Ann 1



Tiemeyer - War Memorial



Schaeffer



Mary Ridge



Livingston / Wright



APPENDIX III - PUBLIC MEETING MINUTES
(this page intentionally blank - minutes on the following pages)



October 18, 2017
St. Ann Park Board Meeting Date

Board Members Present

Ward 1	Pete de los Santos
Ward 2	Becky Buckley
Ward 3	Mary Godfrey
Ward 4	Joan Zoll - Absent

Member at Large June Deering

Parks & Recreation Department Representatives

Tim Younker, Director of Parks & Recreation and Raini DeBarr, Administrative Assistant

Others in Attendance: Alderwoman Kathy Asinger-Campbell, Alderwoman Amy Poelker and 4 residents.

MINUTES

Call to Order

The St. Ann Parks & Recreation Board held its 487th meeting on October 18, 2017 at the St. Ann Community Center. # 1 Community Center Drive, St. Ann, Missouri 63074. Noting a quorum present, Tim Younker called the meeting to order at 5:30pm.

Public Portion

- To be held at 6:30pm portion of public input meeting.

Approval of Minutes Motion was made by Becky Buckley and Seconded by June Deering to accept the minutes of September 20, 2017.

DEPARTMENT REPORTS – Directors Report

Community Center

- Next set of classes starting.
- Basketball use has picked up.
- Sunday Volleyball has started again. Residents and Non-residents pay the guest fee to play.

- Sportsmonster is back to Wednesday Volleyball 7-9pm.
- The Glow Golf Tournament on October 6th was a success. 20 Teams. 2 holes had 3 groups which slows them down considerably we should look at limiting it to 18 teams.
 - June: Mary and Niki deserve extra thank yous for staying past midnight for clean-up.
 - Tim: Shawn wants to do a spring event as well.
 - Mary: Can we do a critique meeting for that event? There's some suggestions to go over like adding more balls, figuring out an additional cost for the balls. More glow sticks to mark hazards & fairways.
 - Tim: Sure.

Golf Course

- Part timers are close to the 1500 allotted hours for the year. We won't be able to use them as much in the winter now.

Pool

- Niki has submitted her resignation a few weeks ago now. She is moving on to another job with more potential for advancement and raises. We wish her well.
- Pool will need to be outsourced as we have no one else licensed to be the aquatic manager. It was very difficult to find someone before at the salary we offered which is why Niki stepped up and was willing to get the training and be the manager for us.
- RFP bids are out and due this Friday @ 2:00 AT City Hall. They will have to retain our staff at our rate or above.
 - RFP is written out for Management Company to take over as of November 6th.
 - There are 4 companies in St. Louis. Only 2 do municipalities. Lifeguards Unlimited and Midwest Management.
 - RFP includes:
 - Lifeguard's
 - Management
 - Our lessons – Still our instructors & concessions
 - Tests and Apply Chemicals
 - Special Events 7 Pool Rentals will be on their RFP not to exceed limits dealing with these.
- Pool was winterized Friday of last week.
- Currently working on details concerning the resurfacing for next year. We want to be sure to get on the list so we can open on time for the season.

Park Maintenance

- Hockey Rink is still not done due to pulling Gary and Tom off for other projects and issues. Rink walls will be white inside and sandstone outside. Fence will be black. Surface stays the same. A decal or park logo will be on the wall somewhere.

- Mary: The keep out signs need replaced.
- Surfacing will have to wait till spring now that the weather has turned cold.

Senior Report

- October Trips:
 - It's a musical at the Sheldan October 4th.
 - Jackson Scenic Railroad on October 11th.Continuing senior events: Golden Club. Peregrine Volunteers, & Singles dining out.
- Senior Van: We went with the low bid on a Chevy. A week after approval the dealer said we couldn't get the van till January due to the plant shut down. They came back to us with an offer of another van still low bid. A few other issues have happened now the owner is involved to get this resolved. They have provided another van, reduced the price to match what we originally approved. Should have it by next week then we'll need to get it wrapped with the logo and you should be seeing it at the end of month on the street.

BOARD MEMBERS REPORTS

Becky Buckley:

- Everything looks great. What happened with the glow balls at the glow golf event?
 - Tim: Last year the ball that was ordered was not bright and the glow stick comes out. This year we ordered the other kind.

June Deering:

- Vatterott Backstops need finished.
 - Tim: I had talked to Mr. Rowlett about that before St. Ann Day. I'll call again to remind him it needs done.
- Pavilion Project at Tiemeyer. Will winter be a problem?
 - Tim: Should not. Will try to get Bill Z. staff to finish staining. Gary & Tim will finish remained of siding.
- Did the tournament this weekend go ok?
 - Tim: Yes.

Pete de Los Santos:

- Does Vatterott Field get graded?
 - Tim: We gill it at the beginning of the season & again the week before St. Ann Day so it looks good during the parade.
 - Why are so many rocks in the ball dirt?
 - Tim: Years ago Lee White was told it was clean dirt they added to the fields. It was not, and therefore rocks make their way to the surface over time.
- Schafer Park:

- Has a fountain that keeps running.
- The Tower area still has that area that's not asphalted.
 - Tim: Shawn was aware of this however he is no longer with us I'll forward this to Mark Pakin.
- Field conditions: all are flooded.
 - Tim: We're aware. They all need clean dirt added to them but it has not been in the budget for years now. Once done though it would be nice to look into renting them.
- St. Ann Park: North end tree by the restrooms is leaning on the power lines.

Mary Godfrey:

- Thanks to the St. Ann Day Staff for all the hard work.
- Are we replacing the missing swing at Mary Ridge soon?
 - Tim: I'll speak to Gary about it.
- Doggie bags need refilled. Does the public know to contribute? June and I already filled Tiemeyer.
 - Tim: We can do a post about it but each tube has a request to add bags.
- Community Center walk thru fixes: did the leaks get fixed because I walked thru myself tonight and noticed several areas.
 - 2 in the cardio area
 - 3 in the gymnasium
 - The light in the lobby is still out since beginning of summer
 - 202 still has that separated floor area.

Tim: I'll talk to Bill Zalaski about those things. Paric was agreeable to come back and fix a few things but I do not know when as Bill Zalaski was given control of that.

- Also while here the other day I noticed cannabis smoke in the parking lot... What is done when that's noticed?
 - Tim if you notice it inform the staff so they can call the police. I don't want our staff confronting anyone under the influence.

UNFINISHED BUSINESS

Lake Renovation:

Currently out for bid. There is a pre-bid meeting taking place on October 24th.

The aldermen will select a contractor at the November committee meeting. Weather permitting the project can start in December. SWT is also on the project. They may be able to answer any questions for you tonight as well.

Sand Volleyball:

Schafer Park will have a standard size sand volleyball pit added this spring.

Pool Fees:

Fees were discussed. Recommendation is to table it till next month when more discussion can take place. Be thinking about how much to lower it and is it for residents only that we lower the price.

All Board members vote to table item.

Rock Garden:

- Volunteers would need to do all the work. Florissant does have 4 gardens (including one in front of their city hall) and had the same safety concerns we do. However, it seems to be going relatively well for them.
 - Board is in favor of trying one.
- Florissant is willing to send us photos for next month.
- More discussion at next month's meeting.

October Food Truck Event:

- Sunday October 29th. 12-5pm here at the community center.
- Park Board volunteers be sure to let us know if you can help.
- 1 indoor vendor, games and bounce house inside gym. 12 trucks outside and the trunk or treat event outside.
- Next year event will be at St. Ann Park at the request of SABA to compare the attendance of each event.

ADJOURN TO PUBLIC PORTION 6:30pm

Tim Younker, Parks Director opened the public portion at 6:30pm.

No one wishes to address the board.

2nd and Final Public Input Meeting: SWT explained priorities and draft of summary.

From this presentation you can get construction grants for future playground improvements.

It contains:

- Introduction
 - Public Engagement
 - Ward Maps
 - Assessment information
- Summaries:
 - Structure: Year of manufacture, Comfort and Convenience
 - Equipment: Age, Condition, Paved Walks. Surface. Swings and Inclusion if any.
 - Comfort: Furnishings, Shade, Picnic area, Restrooms, and Fountains
- A detailed criteria
- Individual Playground assessments

- General overviews of the park
- Assessment of matrix
- Playground recommendations: Maybe just smaller things like surface or adding swings to an area.

Schafer Park: Low Priority

Tiemeyer Park 1-2-3: Higher priority – has pea gravel which is not accessible, maybe some new types of play to add to this area.

West Playground: Is newer but still a higher priority.

Mary Ridge Park: Highest scoring park due to condition of playground, swings, and shelter area. Surfacing was big here and having accessibility improvements. Overall a higher value playground.

Mulch is an acceptable playground cover but it is not preferred when doing accessibility.

Tim mentioned wanting rubberized surfacing to be a high priority

St. Ann #1: Again higher scoring. Mulch needed near trail area.

#2: Higher scoring with swings but has pea gravel. This could be an area you do a distinctive play area in.

Livingston Wright: Lowest scoring playground. Location and pea gravel are issues. Doesn't necessarily have to make it high priority project though. Considering it's not an 'event' or focal spot. It's more of the small neighborhood playground.

- The updated Matrix now reflects the order each park falls into. From scoring standpoint they all scored well considering the age.

Tonight is prioritization:

Ranking

1	Livingston Wright Playground
2	Tiemeyer 1-2-3 Playground
3	St. Ann #2 Playground
4	St. Ann #1 Playground
5	Tiemeyer War. Memorial Playground
6	Schafer Playground
7	Mary Ridge Playground

Prioritization

1	Tiemeyer 1-2-3 Playground
2	St. Ann #2 Playground
3	St. Ann #1 Playground
4	Tiemeyer War Memorial Playground
5	Schafer Playground
6	Mary Ridge Playground
7	Livingston Wright Playground

- Reason: These have the most opportunity of use.
- Sch/MR/LW could have smaller projects done to update them, something as simple as plantings for drainage, a pathway or a swing set.
- Tiemeyer and St. Ann being high use parks can do a destination playground to bring more people in.

Does anyone have any other suggestions or prioritizations?

No: Most agree with listing.

- Appendix: or end of document.
- Photos of inclusive play elements are included. (example would be JC park in St. Charles)
- Senior elements with photos
- Teen Element's with photos: Skate & climb structures.
 - Amy: What's the liability with teen structures?
 - Jay: Florissant has a teen warrior area you can go look at. They may be able to tell you more about the liability option. St. Charles and Webster Groves also have a skateboard area as well.
- Fitness can be incorporated as outdoor classroom space as well. We did one for Des Peres and Clayton if you'd like to go look.
- Nature Play: Natural elements like logs and boulders etc. Water play landscaping. Indian Camp Creek Park was done SWT.
- Southwest Park in Webster Groves at Bend in Rock Hill near community center is another example.
 - When you think Adventure play think City Museum...
- Big Adventure ideas can be scaled down and integrated maybe into playground areas or along the park.

SWT: St. Louis County has a grant program: The Municipal Grant Program that covers 80% of projects. It is one of the best programs we have seen available. St. Ann due to its size can get up to \$420,000 in grants.

We have seen corporate sponsors partner with cities on groups before. Kohls sponsored an inclusive playground in Tillis Park Recently. And there are also federal funding programs as well. Those however are a 60/40 program and more requirements and dedications to open space.

At the very end of slide show was photos of playgrounds from other parks.

Next step would be to get a grant, more public meetings, and then do a play and apply for grant.

Amy: Can we do meetings during our food truck events to get more people involved?

SWT: Sure

Adjournment

Motion made by Mary Godfrey

Seconded by Pete de Los Santos

TIME: 7:33pm

Next meeting will be held on Wednesday, November 15, 2017

Signed: Mary Godfrey Attest: Rebecca Buckley